



# Yongsan Hotel Project

Jerome Stubert | Cluster General Manager | October, 2016

**ACCOR HOTELS**  
Feel Welcome



202



286



621

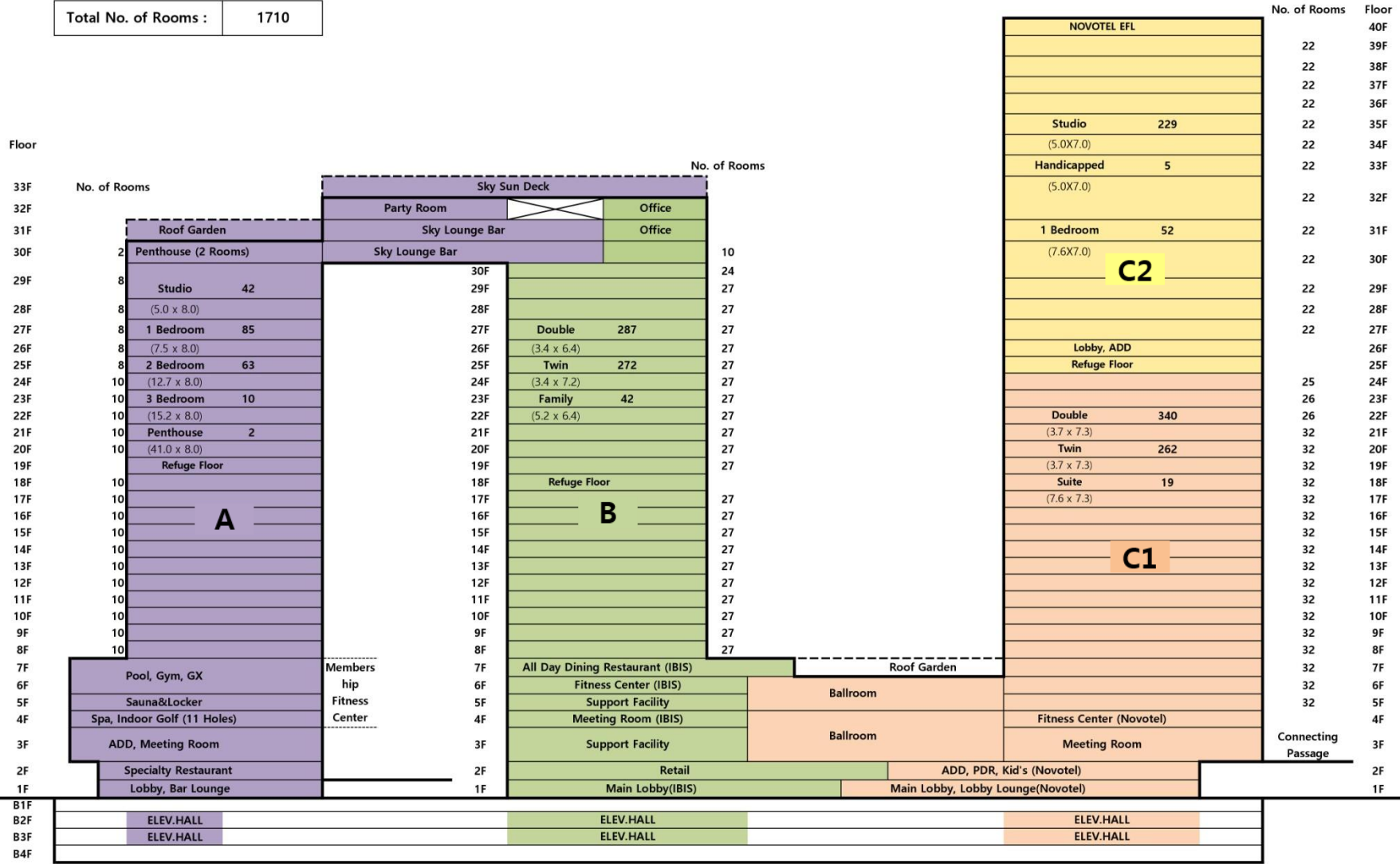


601

**1710 Rooms**

**Grand Open October 2017**

Total No. of Rooms : 1710



**A** Grand Mercure (202 Units)

**B** Ibis Styles (601 Units)

**C1** Novotel (621 Units)

**C2** Suite Novotel (286 Units)

# **Yongsan Hotel**

## **PERSPECTIVE**





GRAND MERCURE







GUEST RM CORRIDOR



3BR LIVING RM



2BR LIVING ROOM



MASTER BATH











GUEST RM CORRIDOR



ONE BEDROOM



LIVING RM

STUDIO





1F LOBBY

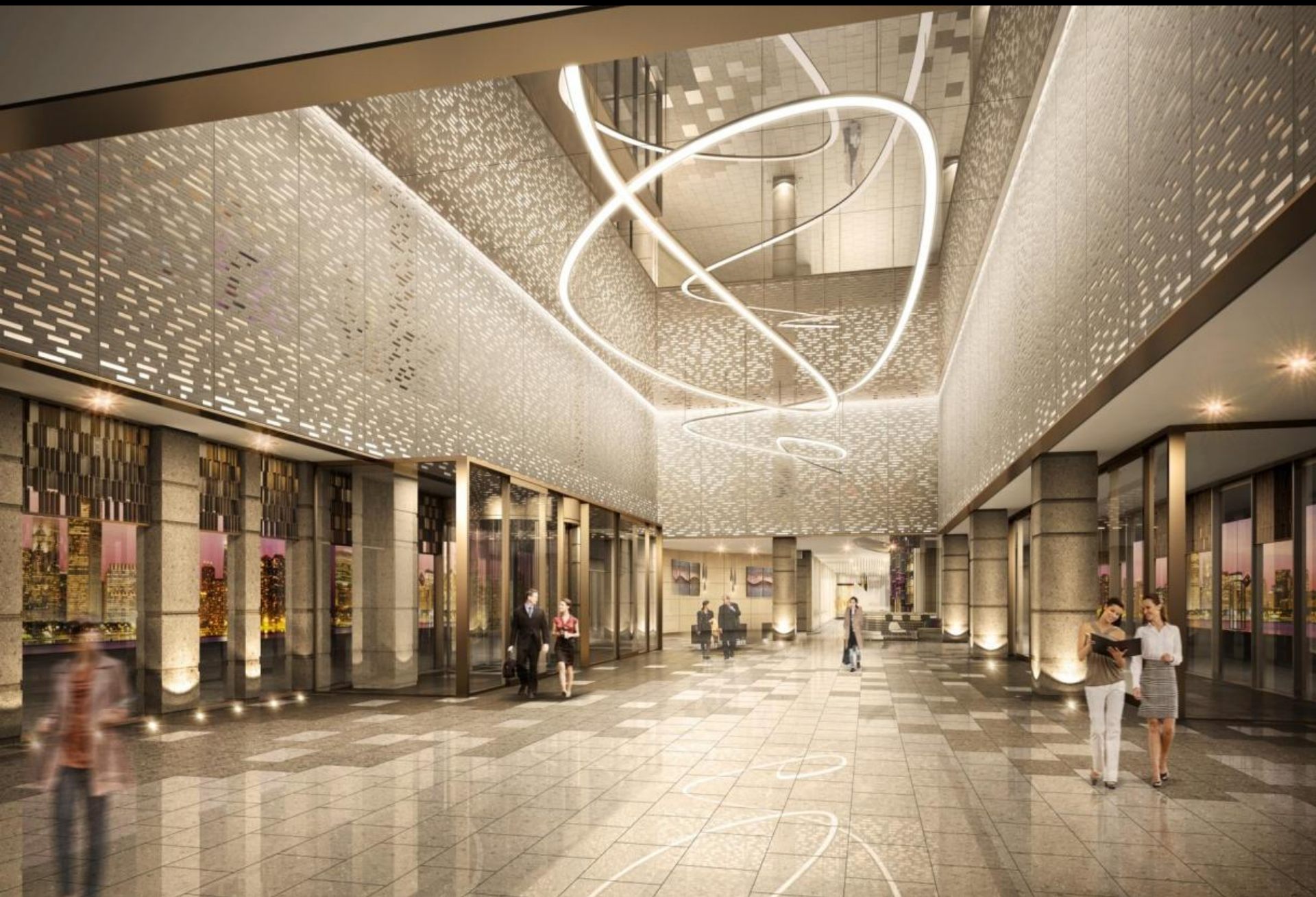


1F LOUNGE











3F PRE



3F BALLROOM



3F PYEBAEK ROOM



3F BRIDE ROOM



A modern hotel room with a desk, bed, and decorative wall. The room features a white desk with a laptop and a green chair. A bed with white linens and yellow pillows is positioned against a wall with a large blue puzzle piece design. A green pillow with the ibis Styles Hotels logo is in the center.

**ibis**  
STYLES  
HOTELS





CHESS RM



CHESS FLOOR



PUZZLE RM



PUZZLE FLOOR

# **Yongsan Hotel**

## **GREEN AREA**



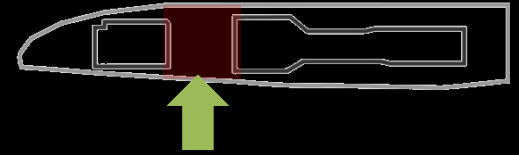
**LANDSCAPE DESIGN(1F)**  
**Green Wave Plaza**





# LANDSCAPE DESIGN(2F)

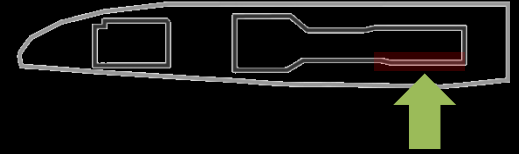
## Inter Deck





# LANDSCAPE DESIGN(4F)

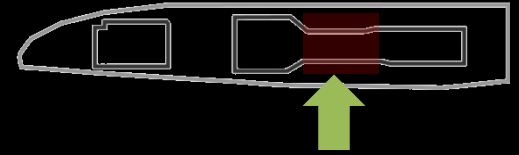
## Breezy Garden





# LANDSCAPE DESIGN(7F)

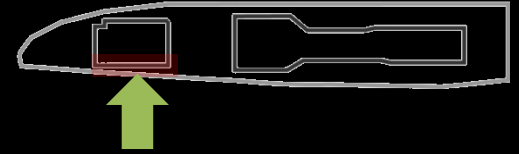
## Event Garden





# LANDSCAPE DESIGN(31F)

## Healing Garden



**LANDSCAPE DESIGN(32F)**  
**Community Garden**





# **Yongsan Hotel**

## **G-SEED**

The Ministry of Land, Infrastructure and Transport



**G-SEED**

GREEN STANDARD FOR ENERGY  
AND ENVIRONMENTAL DESIGN





| STANDARDS                         | TOTAL(100%) | Score Obtained | Rate | Weighing | Final Score |
|-----------------------------------|-------------|----------------|------|----------|-------------|
| Land use                          | 8           | 6.0            | 0.75 | 10       | 7.50        |
| Energy & Environment<br>Pollution | 27          | 21.8           | 0.81 | 30       | 24.22       |
| Materials & Resources             | 9           | 9.0            | 1.00 | 15       | 15.00       |
| Water cycle                       | 13          | 13.0           | 1.00 | 10       | 10.00       |
| Maintenance                       | 6           | 6.0            | 1.00 | 7        | 7.00        |
| Ecological Environment            | 12          | 7.5            | 0.63 | 10       | 6.25        |
| Indoor Environment                | 23          | 15.0           | 0.65 | 18       | 11.74       |
| Total (100)                       |             |                |      |          | 81.71       |

| Compliance  | YES/NO |
|---|--------|
| Energy Performance                                | YES    |
| Using Eco-Certified Products for Recycling        | YES    |
| Recycle / Separate Collection                     | YES    |
| Water Saving                                      | YES    |
| Validity of Operation / Maintenance of Guidelines | YES    |
| Using Low-emission Materials for Indoor air       | YES    |
| Total   | 81.71  |
| Grade   | BEST   |

# Low-Energy High-Efficiency Green Building

## Major Energy Saving Plan



## Energy-saving plant



**Geothermal Heat Pump**  
1,836 Kw  
(522 USRt)



**Solar Power**  
257kW



**Fuel Cell**  
145 kW



**Ice Storage**  
24,200 USRt·h





# Thank You

Jerome Stubert | Cluster General Manager | October, 2016